

Club News

Well spring has sprung and the grass is growing and before long we may hear the gentle hum of lawnmowers in the near and distance. Birds are singing and nesting and the trees are blossoming, the garden and countryside is emerging from its winter sleepover. A lovely time of year apart from the fact that it occasionally impinges on our hobby. Warmer days means the dust may stick to industrious faces and the workshop gets a little too warm and the garden constantly calls for our attention whether we like it or not. So, are we a miserable lot hiding away in sheds and workshops? No of course not, we are some of the most engaging and chatty people I know. On the plus side there are lots of woodturning events and shows to enjoy. It's also great to get outside and sort the drying wood pile with the chainsaw free of the rain and cold wind, and of course we can devise ideas for our next creation while manicuring our stripy lawns or if we are fortunate to get a few moments to read a copy of woodturning magazine in our favourite garden chair..

All of this leads to my next point which is the Weird and Wonderful Wood Show at Haughley Park, 13th and 14th May 2023. The show is described as "A specialised art and craft festival with a difference – dealing solely in wood." It's a real smorgasbord of entertainment and crafts and it never ceases to surprise us with impromptu music and wandering street entertainers. The large site caters for many crafts from chainsaw carving to fine furniture making and instrument makers to miniature woodturning. Of course, there are some great opportunities to teach children the wonder of trees and the wonderfully adaptable by-product of wood, with hands on crafts and tuition.



Our club will be in attendance and is an ideal opportunity to promote our club and the heritage craft of woodturning to old and new alike. We have our club tent and banners and provide a tombola, a display of items and a demonstration lathe. What we don't have is enough people to help!



As said the show is an ideal opportunity to engage with the general public and while we are at it maybe sell a go on our tombola for the opportunity to win a little turned object while providing a little income for our club. ***We are a friendly bunch and people are always having a good old chat at the club evenings***, so how about doing the same and volunteering to help over the weekend? You can still look around the show and if you help to set up and dismantle will already be on site before the show starts for a potential sneek preview as well a look around during the day!

This is an important event for the WSWC and we do need tombola prizes, only little trinkets or a bowl if you wish but the point is every donation will earn a little money for the club, with rising costs this is obviously important.

So, we are asking if you may please either donate your time and or objects for the tombola, preferably both. It will help promote our hobby and keep our club treasurer happy! While you are there you will probably get inspiration for your next turning project, maybe pick up some timber or a tool or two and marvel at the displayed crafts happy in the knowledge that you are part of it and keeping our wood crafting heritage alive.

Peter Taylor Memorial Competition

Entries will need to be brought along on the meeting on April 17th, the theme is animals. It can be anything, maybe an elephant biscuit barrel, a comical cow decorated in your latest paint ideas, a pyrographed coaster, or for the more adventurous a herd of beautifully carved wildebeest or how about a 'Russian doll' set of turned animals. Quite simply this is a very open competition with a very wide theme.

The same night will be a multi turn and we are expecting to see several members demonstrating and discussing their latest technique or ideas. Its always a very sociable evening.

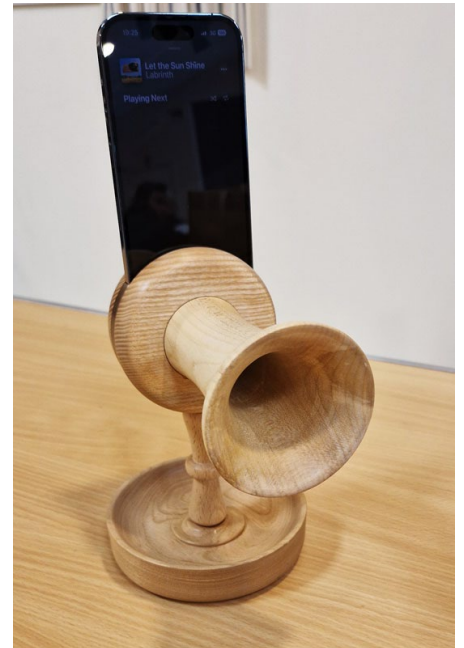
Well, that's it for now, enjoy your turning or wood craft and help us to promote it as we move into the better weather and ***never let it be said we are a miserable lot hiding away!***

Neil (Newsletter and website)

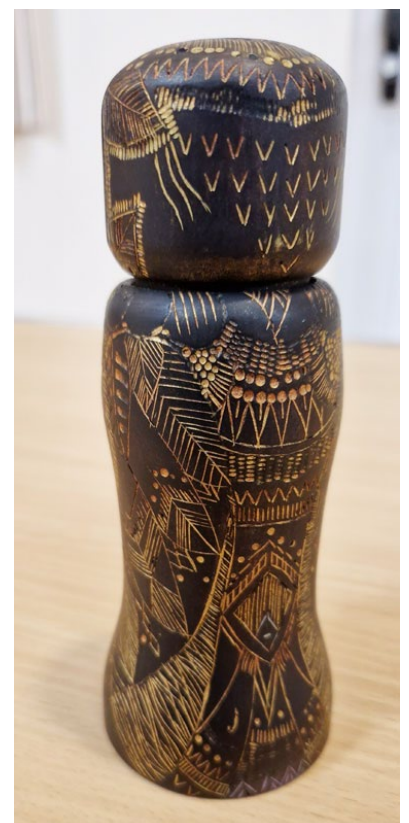
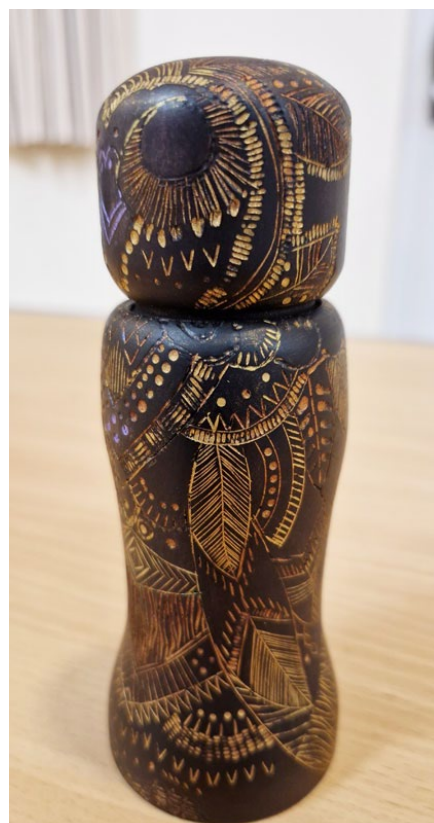
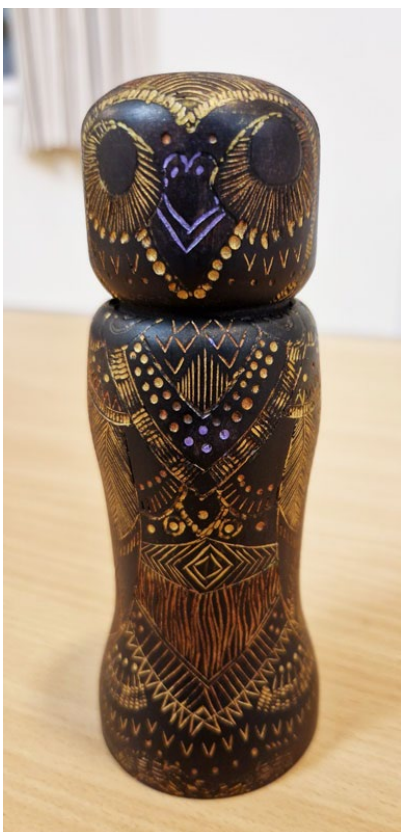
Display Table

Mick Faverger passive amplifying speaker in beech and walnut (not a megaphone...).

This has been designed to accept a mobile phone and amplifies the call or music through the horn. Ideal for those who don't like batteries and a stylish and clever statement piece.



Tic Challis Owl Totem. Turned, ebonised and decorated with gilt wax over deep pyrography. Approx 6 inch, 150mm.



Goblet with carved twist stem from a Birch branch made by Richard Court. The beauty of Birch as a flexible and forgiving timber is shown here as it is thinly turned, almost translucent, from a branch with the pit slightly off centre without splitting or cracks. Approx 4 inches, 100mm



Meeting report 20th March 2023

Resin techniques: Demonstration

THIS REPORT HAS BEEN REMOVED AT THE REQUEST OF THE DEMONSTRATOR